



Estimating the environmental costs and benefits of demolition waste using life cycle assessment and willingness-to-pay: A case study in Shenzhen



Ting Wang^a, Jiayuan Wang^b, Peng Wu^{c,*}, Jun Wang^d, Qinghua He^e, Xiangyu Wang^d

^a School of Economy and Management, Tongji University, 1063 Siping Road, Shanghai 200092, China

^b School of Civil Engineering, Shenzhen University, 518060, China

^c Department of Construction Management, Curtin University, Kent Street, Bentley WA6102, Australia

^d Australasian Joint Research Centre for Building Information Modelling, Curtin University, Kent Street, Bentley WA6102, Australia

^e Research Institute of Complex Engineering and Management, School of Economy and Management, Tongji University, 1063 Siping Road, Shanghai 200092, China

ARTICLE INFO

Article history:

Received 9 June 2017

Received in revised form

9 October 2017

Accepted 15 October 2017

Available online 16 October 2017

Keywords:

Demolition waste

Recycling

Landfill

Life cycle assessment

Willingness-to-pay

Environmental cost and benefit

ABSTRACT

Construction and demolition waste is one of the largest contributors to solid waste generation. Recycling is considered an effective strategy to manage construction and demolition waste; however, the environmental costs and benefits of recycling, compared with a traditional landfill strategy, have not been fully investigated. This study uses a life cycle assessment and willingness-to-pay methodology to investigate the environmental impacts of recycling 1 tonne of demolition waste in Shenzhen. The environmental impacts are global warming, ozone depletion, acidification, eutrophication, suspended particulate matter, solid waste, and land consumption. The results show that recycling can bring an environmental benefit of ¥1.21 per tonne while direct landfill leads to an environmental cost of ¥12.04 per tonne. The environmental costs and benefits of recycling concrete, brick, steel, and mortar, which are the most commonly seen types of component from demolition waste, are also investigated. The results can be used by regulatory authorities to establish strategies and policies, such as the provision of monetary incentives, in order to encourage recycling activities. The results can also be used to establish appropriate landfill charges.

© 2017 Elsevier Ltd. All rights reserved.

1. Introduction

Construction and demolition waste (CDW) has a significant environmental impact which requires immediate action. In the European Union, 3000 million tonnes of waste are produced every year, of which 25–30% is generated by the construction industry (Bravo et al., 2015). Similarly, in the United States, 530 million tonnes of construction and demolition debris were generated in 2013 (US Environmental Protection Agency (EPA), 2013). Construction activities consume 25% of the virgin wood and 40% of the raw stone, gravel, and sand which are used globally every year (Kulatugna et al., 2006; Wu and Low, 2011). In addition to resource

depletion, CDW has a significant impact on land degradation, global warming, and ozone depletion (Coelho and de Brito, 2012). For example, 14 million tonnes of waste are landfilled each year in Australia, 44% of which comes from construction activities (Lu and Tam, 2013). According to Bhada-Tata and Hoornweg (2016), disposal is a significant source of carbon emissions and landfill is a significant source of methane, both of which contribute to global warming.

Because of the negative impact of CDW on the environment, many studies have investigated its environmental impact. For example, in a Spanish case study, Ortiz et al. (2010) used the life cycle assessment (LCA) method to evaluate the environmental impact of construction waste. Similarly, Coelho and de Brito (2012) investigated the environmental impact of buildings by using five waste management options—complete demolition, selective demolition, deconstruction of non-structural elements, full deconstruction and recycling, as well as full deconstruction and partial recycling. Selective demolition, which is the reverse of the

* Corresponding author.

E-mail addresses: wangting2016@tongji.edu.cn (T. Wang), wangjy@szu.edu.cn (J. Wang), peng.wu@curtin.edu.au (P. Wu), jun.wang15@student.curtin.edu.au (J. Wang), heqinghua@263.net (Q. He), Xiangyu.wang@curtin.edu.au (X. Wang).

construction process, has been introduced for easy recycling and reuse (Lu et al., 2009; Coelho and de Brito, 2013). The method can help reduce the overall demolition cost by reducing disposal charges (Lu et al., 2009). Many studies treat CDW in a similar way because both sources of waste are generated from the construction industry. However, it should be noted that the amount of demolition waste is significantly higher than the amount of construction waste. According to the US EPA (2013), demolition activities cause more than 90% of total CDW. As such, demolition waste should have a higher priority than construction waste. It should be noted that the exact contribution of demolition activities to CDW may vary depending on country-specific characteristics and site conditions. For example, demolition activities, which contribute to 74% of annual CDW in China, only contribute to 36% of annual CDW in Norway (Statistics Norway, 2017; Lu et al., 2017). In addition, the composition of construction waste and demolition waste varies significantly, indicating that waste management strategies developed for managing construction waste may be unsuitable for demolition waste management. According to Zhao and Rotter (2008), the composition of construction waste in China includes concrete, sand, brick, and stone, while the most significant components in demolition waste are brick and tile, followed by concrete. Because such composition differs significantly, it is useful to separate the evaluation process of the environmental impact of CDW. Moreover, many scholars use case studies to investigate the environmental impact of construction and demolition activities (Wu et al., 2015, 2016). It should be noted that case studies can be useful to evaluate the environmental impact associated with specific buildings or processes; however, case studies rely on data from individual construction and demolition activities such as the construction of a single family home (Cuéllar-Franca and Azapagic, 2012) and a commercial building (Zhang et al., 2013). Thus, case studies may offer limited guidance and reference for local governments which rely on local and regional analysis to establish CDW policies, such as charging appropriate fees for mitigating CDW's environmental impact.

Consequently, the current study aims to 1) investigate the environmental impact of demolition waste using the LCA approach; 2) compare the environmental costs and benefits of demolition waste from two different treatment pathways—recycling and landfill—using the willingness-to-pay (WTP) approach; and 3) investigate appropriate levels of fees and charges to mitigate the environmental impact of demolition waste. The results will be useful for regulatory authorities to understand the environmental costs and benefits of demolition waste and establish relevant strategies to reduce demolition waste. It should be noted that this study focuses on ordinary demolition waste management scenarios and excludes scenarios which include the occurrence of natural hazards, such as seismic hazard assessment and post-quake recovery (Jun et al., 2012; Faleschini et al., 2017; Zanini et al., 2017).

2. Literature review

2.1. The environmental impact of CDW

CDW is usually defined as the solid waste which arises from construction, renovation, and demolition activities (Lu et al., 2011). Shenzhen is a rapidly developing megacity in China. According to Wu et al. (2016a), approximately 14 million tonnes of demolition waste have been generated annually in Shenzhen since 2010; moreover, because of the rapid urban development, CDW generation is expected to increase in the future. Wu et al. (2016b) used a geographic information system (GIS) to investigate the waste types and volumes associated with buildings in Shenzhen. According to

Wu et al. (2016b), the expected demolition waste types in Shenzhen include concrete (57.2%), brick (16%), mortar (12.4%), metal (4.9%), glass (0.2%), and others (9.3%). In order to manage the large volume of CDW, landfill and recycling have been adopted, with 10 landfill sites and six recycling facilities established over the past two decades (Wu et al., 2016a).

CDW reduction and recycling, as effective waste management strategies, have received much attention for some years. Various strategies and policies have been proposed for the effective reduction of CDW. For example, in Greece, a CDW treatment and recycling unit must be established in each city for inert waste (Fatta et al., 2003). The research on using recycled aggregates from CDW to meet mechanical and durability requirements has also received much attention globally, including in the European Union (Rodrigues et al., 2013). Thus, CDW is a significant problem for many countries because of its high volume and negative impact on the environment. As a result, some studies have investigated CDW's environmental impact. For example, Bohne et al. (2008) evaluated the eco-efficiency of waste treatment strategies for CDW at the city level, Blengini and Garbarino (2010) calculated the environmental impact related to the recycling of inert materials in Italy, and Mercante et al. (2012) assessed the environmental impact of a Spanish CDW management system. Further, according to Solís-Guzmán et al. (2009), the estimated waste volume for new construction is 0.30 m³ per m², while the estimated waste volume for demolition, 1.27 m³ per m², is more than four times greater. In addition, the composition of demolition waste differs significantly from new construction waste. Thus, it is useful and necessary to separate new construction waste from demolition waste when evaluating environmental impact.

2.2. The environmental impact of recycling and disposal

According to Xing and Charles (2006), a few recycling technologies are available for the treatment of demolition waste. For example, manual separation can be used for concrete recycling in order to separate recoverable materials. In addition, crushers can be employed for size reduction, and shaking tables can separate light materials from heavy materials. A recycling plant for concrete usually consists of crushers, screeners, magnetic separators, wind-sifting, and manual separation (Zhao et al., 2010). Fig. 1 presents a simplified concrete recycling process which produces recycled aggregates from crushed concrete. The production of recycled aggregates usually involves primary and secondary crushing to produce aggregates with various size fractions (Li, 2008). The recycled aggregates also need to meet the requirements, such as particle density, water absorption, and fine particles, which are provided in national and international specifications; for example, the Technical Code for Application of Recycled Aggregated Concrete (in China), the Specification for Constituent Materials and Concrete (in the UK), and the Specifications for Concrete with Recycled Aggregates (SCSS, 2007; BS8500-2:2002, 2002; RILEM, 1994).

According to Tam and Tam (2006), as a typical source of waste, bricks from demolition are often contaminated with mortar and plaster. Thus, on-site sorting is usually needed before bricks are transported to a waste treatment plant. Tam and Tam (2006) also found that in Hong Kong, the most common practice for brick recycling is crushing in order to create filling materials and hard core. Fig. 2 presents a typical brick recycling process which produces filling materials from crushed bricks. A similar process to concrete recycling is also adopted for brick recycling, where bricks are crushed, screened, and grouped in accordance with different sizes (Aliabdo et al., 2014). The requirements listed in the aforementioned specifications must also be met if the crushed bricks are

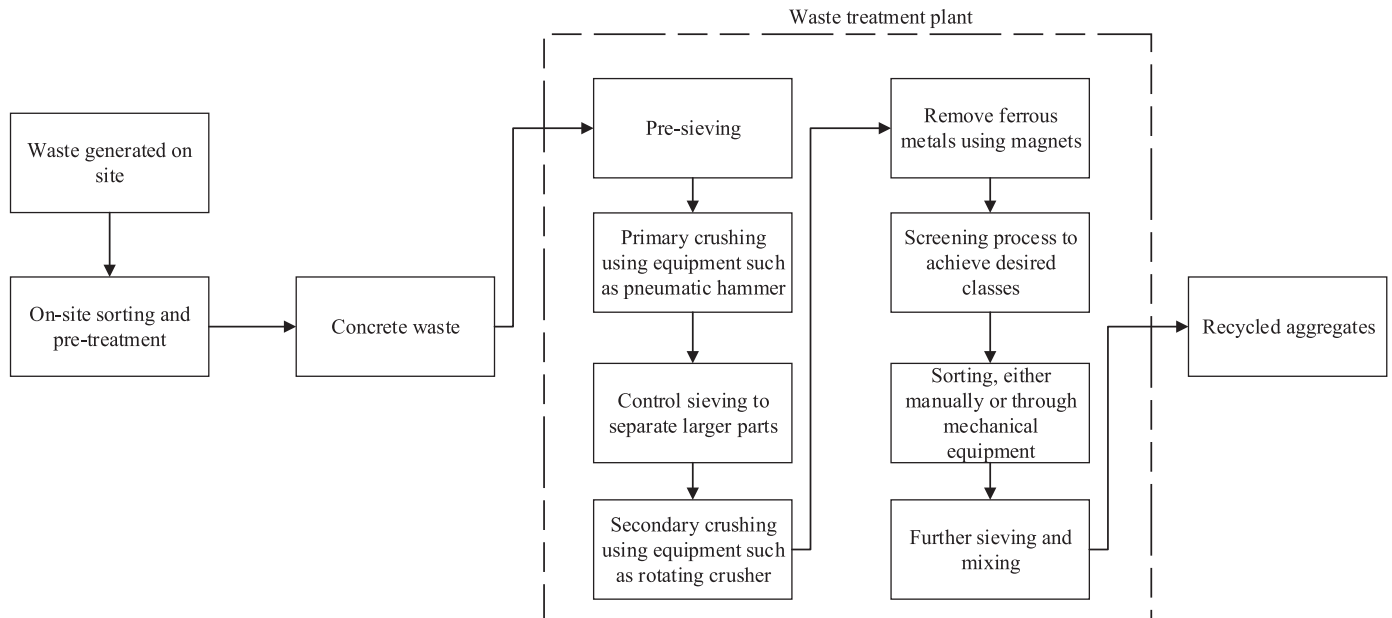


Fig. 1. A simplified process map for recycling concrete waste (Source: Hiete, 2013).

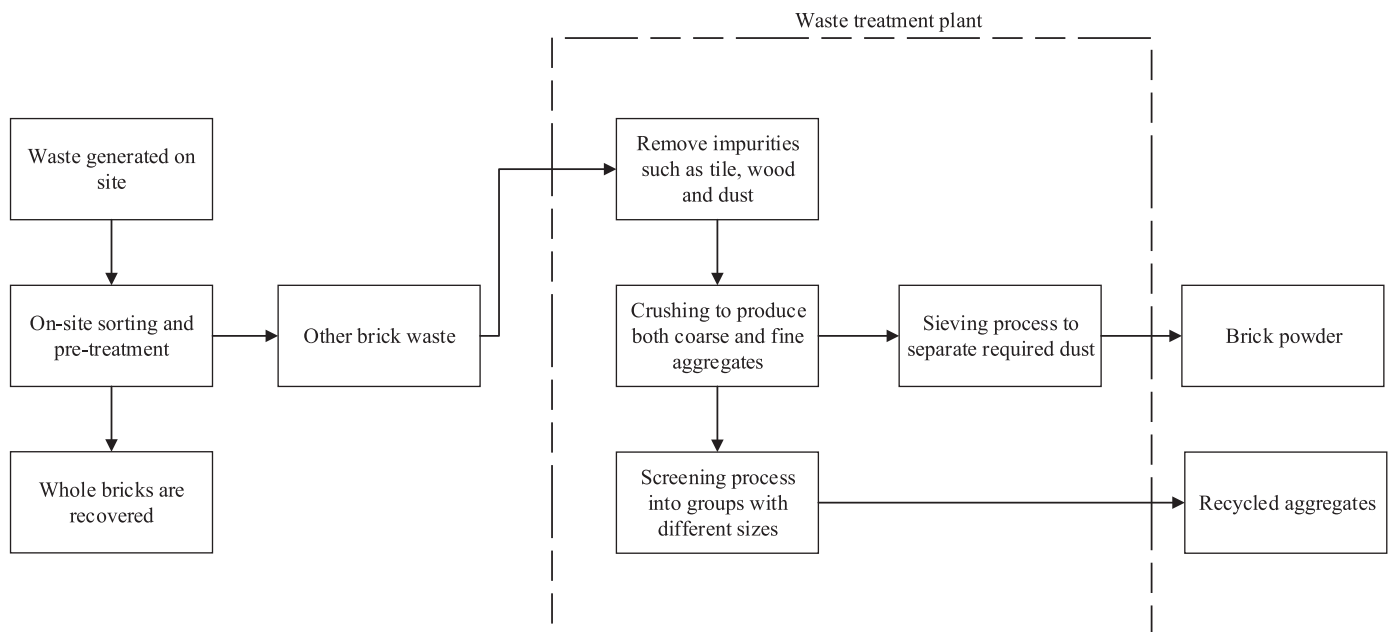


Fig. 2. A simplified process map for recycling bricks as recycled aggregates and brick powder.

to be used as recycled aggregates. Moreover, recycled brick powder can replace cement in mortar; however, the requirements for the mechanical properties of the material, including flow, compressive strength, and flexural strength, must be met (Zheng et al., 2011).

According to Tam et al. (2007a), ferrous metal accounts for almost 3% of CDW in Shenzhen, while non-ferrous metal accounts for less than 0.5%. Ferrous metal, such as steel, has the highest recycling rates from demolition waste because of its magnetic properties and high market value (Kartam et al., 2004). For example, reinforcement bars from crushed concrete can be collected by scrap dealers who then sell the bars for re-melting. Fig. 3 shows a typical production process for steel. As can be seen

from Fig. 3, the production process is related to the use of an electric arc furnace (EAF) in order to recycle steel scrap into finished steel products through charging, melting, and decarburization (Burchart-Korol, 2013).

The recycling process for cement mortar is usually not separated from the recycling process for concrete. However, the value of cement mortar is relatively low when compared with other constituents; indeed, the value of recycled mortar is normally not considered. According to Tam et al. (2007b), cement mortar can have high porosity and water absorption rates which weaken the strength and mechanical performance of concrete made from recycled aggregates. As such, many new techniques have been developed, such as the pre-soaking approach (Tam et al., 2007b), to

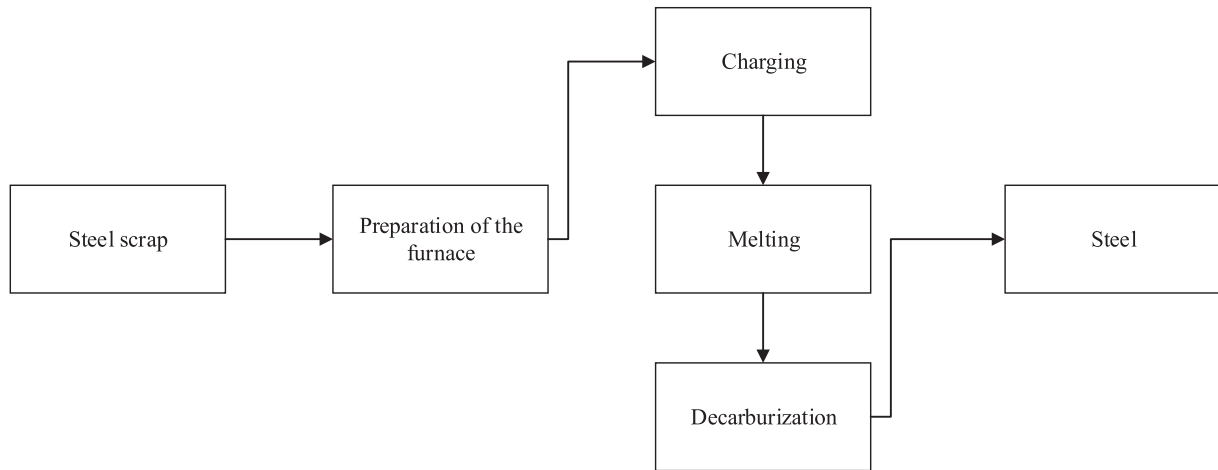


Fig. 3. A simplified steel recycling process.

remove cement mortar from recycling activities. In addition, new methods, such as the equivalent mortar volume (EMV) method, have been developed to ensure that concrete made with recycled aggregate concrete satisfies mechanical and durability requirements (Abbas et al., 2009). Because these technologies have yet to be implemented in Shenzhen, the recycling activities for mortar can be represented by Fig. 1.

2.3. CDW disposal charge

A CDW disposal charge is considered one of the most effective strategies to help minimise disposal. According to Hao et al. (2008), because waste producers are charged when disposing of CDW, they are encouraged to recycle in order to reduce their disposal costs. However, it should be noted that the implementation of a disposal charge in China is restricted to municipal solid waste, not CDW. The difficulty in establishing an appropriate disposal charge for CDW is partly related to the need for an effective mechanism to quantify its impact (Yuan and Wang, 2014). Consequently, a few studies have investigated the establishment of such a charge. For example, Yuan et al. (2011) used simulation to investigate the effectiveness of high and low disposal charges, while Nunes et al. (2007) investigated the financial performance of recycling centres in order to establish an appropriate disposal charge. However, as Martin and Scott (2003) pointed out, the current disposal charges are ineffective at changing the behaviour of the main waste producers. These disposal charges are mostly related to municipal solid waste instead of CDW and may be too low to force a change towards recycling and reusing. In addition, the disposal charges are not quantitatively related to the impact of CDW, including its environmental impact. This failure to link the charges to CDW's impact is a research gap which

needs to be filled.

2.4. LCA

LCA has been widely adopted to evaluate the environmental impact of products and processes in the construction sector. The overall environmental impact of a product/process is calculated by evaluating the environmental impact associated with the input and output (Zhang et al., 2013; Wu et al., 2014; Wu and Feng, 2012). LCA can help to evaluate many types of environmental impact. For example, the method of the environmental design of industrial products (EDIP) developed in Denmark uses resource consumption, environmental pollution, and occupational health as the main assessment categories (Danish Ministry of the Environment, 2005). In China, the building environmental performance analysis system (BEPAS) is commonly adopted (Zhang et al., 2006). BEPAS has two major impact categories: ecosystem damage and resource depletion. In a similar way to other environmental analysis systems, ecosystem damage considers global warming, ozone depletion, acidification, eutrophication, and solid waste. Based on BEPAS, a total of seven impact categories are selected in this study. These categories, the main pollutants, and the units of measurement are presented in Table 1.

3. Research method

This study uses the LCA approach. The system boundaries, functional unit, and other estimation assumptions are explained in the following subsections.

Table 1
Major environmental impact categories of CDW.

Environmental impact categories	Causes	Main pollutants	Unit of measurement	Sources
Global warming	Energy consumption	CO ₂	kg CO ₂ -e	Wu and Low (2011)
Ozone depletion	Transportation	CFCs	kg ODP	Blengini (2009)
Acidification	Transportation and waste treatment	SO ₂ , NH ₃ , NO _x	kg SO ₂ -e	Gong et al. (2011) and
Eutrophication	Waste treatment	NH ₃ -N, TP, COD	kg NO ₃ -e	Gong et al. (2011)
Suspended particulate matter	Waste treatment	Industrial dust	kg	Yuan (2013)
Solid waste	Waste treatment	Industrial waste and municipal waste	kg	Ortiz et al. (2010)
Land consumption	Disposal	Landfill	m ²	Yuan (2013)

Notes:

CFC—chlorofluorocarbon; ODP—ozone depletion potential; TP—total phosphorus; COD—chemical oxygen demand

3.1. System boundaries

In accordance with the aim of this study, two system boundaries are selected. Fig. 4 represents the system boundary when demolition waste is transported to waste treatment plants for recycling. Fig. 5 represents the system boundary when demolition waste is directly disposed of as landfill.

3.2. Functional unit

The functional unit of this study is 1 tonne of demolition waste originating from demolished buildings. Table 2 presents the composition of demolition waste in Shenzhen, based on Wu et al. (2016b).

Table 2

The composition of demolition waste in Shenzhen.

Demolition waste	Weight (kg)	Percentage
Concrete	588.6	58.86
Brick	292.6	29.26
Mortar	98.3	9.83
Metal	20.5	2.05
Total	1000	100

3.3. Other assumptions

A few other assumptions are also made in order to calculate the environmental impacts associated with the input.

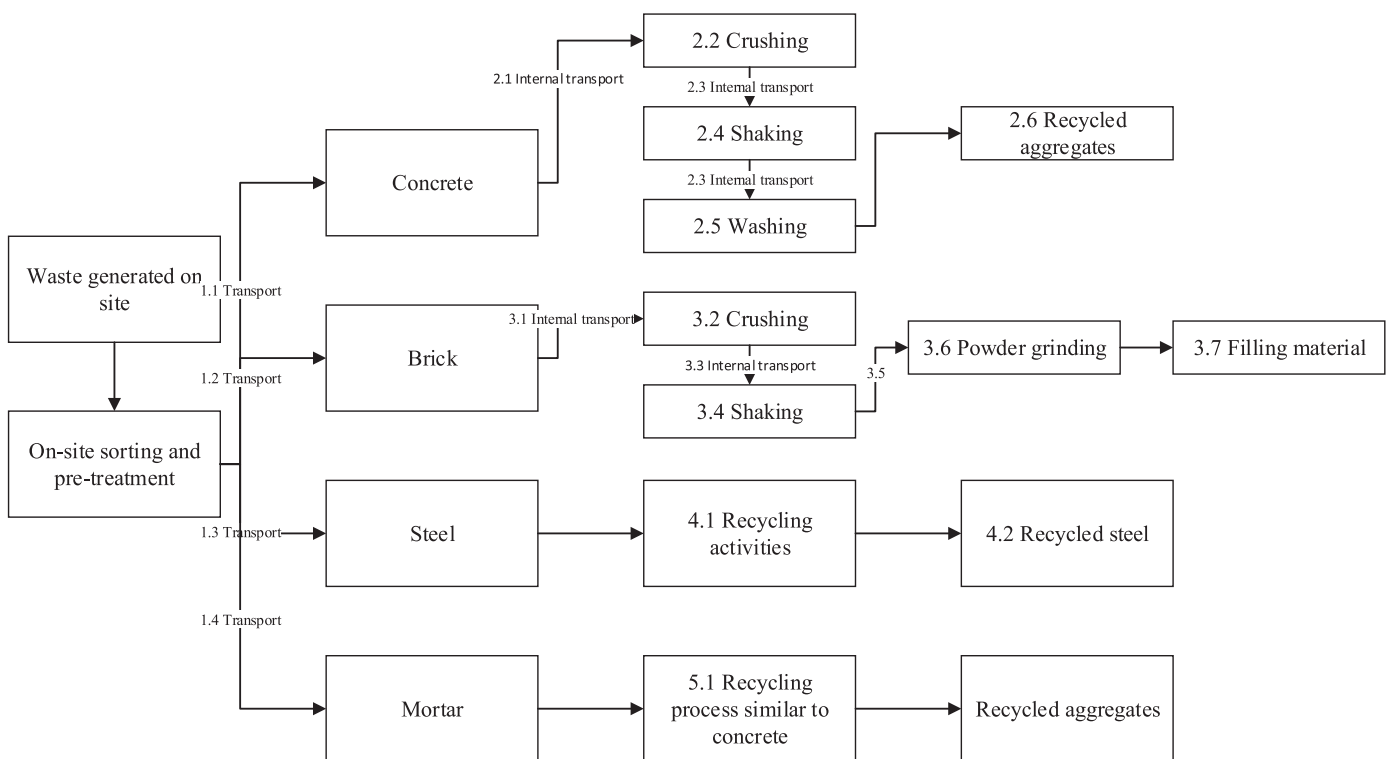


Fig. 4. The system boundary of the recycling practice of demolition waste.

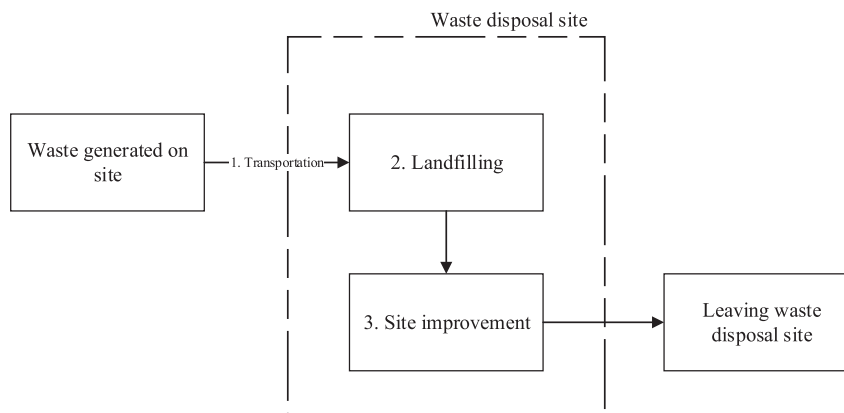


Fig. 5. The system boundary of the landfill practice of demolition waste.

3.4. Transportation

The average transportation distance from a demolition site to a waste treatment plant is calculated as follows:

$$D = \sum S_i * L_i \quad (1)$$

where D refers to the average transportation distance; i represents a district in Shenzhen; S_i refers to the percentage of district i's demolition projects in Shenzhen; and L_i refers to the average transportation distance in district i. In total, seven districts are considered. The overall average transportation distance is estimated to be 19.47 km (see Table 3). Because of the emissions regulation, steel recycling plants are located in Shenzhen's rural areas. Thus, based on the plants' geographical locations, the transportation distance for steel recycling is assumed to be 50.00 km. In addition, Shenzhen has four major landfill sites: Baoan, Longhua, Longgang, and Luohu. Following a similar method to that of recycling, the overall average transportation distance for general disposal is calculated to be 14.71 km.

3.5. Environmental impact factors

Table 4 presents the environmental impact factors used in this study. It should be noted that the environmental impact factors for concrete, brick, and mortar recycling activities include the direct environmental impact of the activities and the indirect impact of diesel and electricity production. This approach is in accordance with many international standards, such as ISO (International Organization for Standardization) 14067 (2013) and PAS (Publicly Available Specification) 2050 (British Standards Institution, 2008), which state that the emissions associated with electricity use shall include the emissions from the generation of electricity, such as the combustion of fuels. In this context, given the large amount of data required in LCA studies, data uncertainty is an inherent problem. Further, according to Finnveden et al. (2005), the uncertainties of

the LCA methodology, such as the selection of system boundaries, are often greater than uncertainties in the data. As can be seen from Table 4, this study focuses mainly on the use of China-specific emission factors and is based on a few highly cited studies, such as those of Yang (2002) and Gu (2009) who proposed the LCA approach and environmental impact factors, in order to mitigate data uncertainty.

3.6. Weights of environmental impact categories

The WTP method is adopted to determine the weight of each environmental impact category. According to Li et al. (2005), the WTP method can help evaluate the weight of each impact category by considering the 'green tax', the impact potential, and the total emission volumes. The weight of each main environmental impact category, i, is calculated with Eq. (2):

$$W_i = \sum e_{ij} * c_{ij} \quad (2)$$

where W_i refers to the weight of the main environmental impact category (e.g. global warming); c_{ij} refers to the pollution discharge fee for impact category j (e.g. carbon emissions) in the main impact category i; and e_{ij} refers to the coefficient of impact category j.

In addition, e_{ij} is calculated with Eq. (3):

$$e_{ij} = f_j * a_j / \sum f_j * a_j \quad (3)$$

where f_j is the pollution equivalency factor of impact category j and a_j refers to the annual pollution volume of impact category j.

It should be noted that there is no discharge fee for carbon emissions in Shenzhen. As such, a questionnaire survey is conducted by this study to investigate the WTP for carbon emissions. The survey uses 14 payment cards (13 cards with values from ¥0 to ¥100 and one card which the participants need to complete if they are willing to pay more than ¥100) to identify the WTP for each

Table 3

The average transportation distances from a demolition site to a waste treatment plant in Shenzhen's seven districts.

	Luohu	Futian	Nanshan	Yantian	Baoan	Longhua	Longgang
Average transportation distance (L_i) (km)	21.1	20.3	11.6	30.1	14.2	13.6	23.5
Percentage of demolition projects (S_i)	46.15%	7.69%	3.85%	1.28%	17.95%	6.41%	16.67%
Overall average transportation distance (km)	19.47						

Table 4

Environmental impact factors of the activities in this study.

Environmental impacts Activities	Global warming (kg CO ₂ -e)	Ozone depletion (kg ODP)	Acidification (kg SO ₂ -e)	Eutrophication (kg NO ₃ -e)	Suspended particulate matter (kg)	Solid waste (kg)	Land consumption (m ²)	References
Transportation	0.228/tonne-km	4.56 × 10 ⁻⁸ /tonne-km	0.071/tonne-km	6.97 × 10 ⁻⁷ /tonne-km	NA	NA	NA	Ecoinvent (2016)
Concrete and mortar recycling	0.017/tonne	NA	2.387 × 10 ⁻⁴ /tonne	4.445 × 10 ⁻⁴ /tonne	1.59 × 10 ⁻⁴ /tonne	45/tonne	NA	Ecoinvent (2016)
Brick recycling	32.35/tonne		1.76/tonne	0.001/tonne	0.241/tonne	8/tonne	0.01/tonne	Wang (2013)
Steel production	2100/tonne	NA	2.9/tonne	0.78/tonne	3.6/tonne	108.7/tonne		Gu (2009)
	Global warming (CO ₂ -e)	Ozone depletion (ODP)	Acidification (SO ₂ -e)	Eutrophication (NO ₃ -e)	Suspended particulate matter	Solid waste	Land consumption (m ²)	
Diesel production	1462 t/MJ	NA	61.532 t/MJ	9.126 t	NA	NA	NA	Yang (2003); Yang (2002)
Electricity production	317,000 mg/MJ	NA	3879.3 mg/MJ	1958.136 mg/MJ	2652 mg/MJ	0.00472 kg/MJ	NA	Yang (2003)

Notes.

1. NA = not applicable.

2. The energy usage of one waste treatment plant and one landfill site in Shenzhen are recorded in order to investigate the environmental impact based on the factors.

tonne of carbon emissions equivalent generated. Before the payment cards are presented, the participants are briefly introduced to the environmental impact of global climate change with some examples. For instance, the carbon emissions coefficient of the coal-energy chain in China is 875 g per kWh (Yu et al., 2014). In addition, some demographic information of the participants, including their ages, salaries, and occupations, is recorded. A simple random sampling method is adopted to ensure that each participant has an equal chance of being included (Sweis et al., 2008). In total, 600 questionnaires are distributed to randomly selected participants in the seven districts in Shenzhen. After excluding incomplete responses, 399 valid responses are recorded, representing a response rate of 66.5%.

4. Results

4.1. Weights of environmental impact categories

Table 5 shows the demographic information of all respondents. According to Burns and Bush (2010), the sample size, N , can be calculated using the following equation:

$$N = \frac{Z^2 \times p \times (1 - p)}{e^2} \quad (4)$$

where z refers to the standard error with a confidence level of 95%; e refers to the accepted error, which is 5% in this study; and p refers to the estimated variance of the population and is 0.5 if the survey contains both continuous and categorical variables. Based on the above calculation, a sample size of 385 is required. Thus, the survey meets the sample size requirement. The average respondent is 26–35 years old, has a diploma, and earns a monthly income of ¥3501–5000. As can be seen from Table 5, the monthly income levels of most respondents are ¥3501–5000 (30.85%), ¥5001–6500 (22.39%), and ¥6501–8000 (13.42%). According to the Shenzhen Human Resources and Social Security Bureau, the average salary of jobs in Shenzhen is ¥4711. Because the WTP for environmental improvement is affected by the income level (Husted et al., 2014), the sample can be considered representative.

Table 6 shows the distribution of the WTP for each tonne of carbon emissions equivalent in Shenzhen. The WTP of carbon emissions is estimated to be ¥37.96/tonne CO₂-e (or ¥0.04/kg CO₂-e).

Table 5
Demographic information of the respondents.

Demographic information	Category	No. of respondents	Percentage (%)
Gender	Male	224	56.14
	Female	175	43.86
Age	<25	135	33.83
	26–35	235	58.90
	36–45	21	5.26
	46–55	6	1.50
	>56	2	0.51
Educational level	High school	21	5.26
	Diploma	113	28.32
	Bachelor	122	30.58
	Master and above	143	35.84
Income level	<2000 (¥)	46	11.53
	2001–3500	28	7.02
	3501–5000	76	19.05
	5001–6500	68	17.04
	6501–8000	58	14.54
	8001–10000	48	12.03
	>10000	75	18.79

Table 6
WTP for each tonne of carbon emissions equivalent.

WTP	Sample size	Percentage	Weighted WTP (¥)	Median
¥0	63	15.79%	0.00	¥20
¥1	3	0.75%	0.01	
¥5	1	0.25%	0.01	
¥10	110	27.57%	2.76	
¥20	45	11.28%	2.26	
¥30	14	3.51%	1.05	
¥40	2	0.50%	0.20	
¥50	72	18.05%	9.02	
¥60	4	1.00%	0.60	
¥70	1	0.25%	0.18	
¥80	3	0.75%	0.60	
¥90	1	0.25%	0.23	
¥100	79	19.80%	19.80	
¥500	1	0.25%	1.25	
Total	399	100%	0.00	

In addition, the weights of other impact categories are calculated using the WTP model developed in this study (see Table 7). It should be noted that there is no CFC tax in China at the time of the study. The Multilateral Fund (MLF) for the implementation of the Montreal Protocol is provided to China to phase out ozone-depleting substances (ODS). This study uses the cost-effectiveness of the MLF-funded agreement to phase out ODS as the WTP to mitigate environmental impact. Such an approach has been adopted in prior studies such as that of Zhang et al. (2006). According to the Global Environment Facility (GEF) (2010), the average cost-effectiveness for the MLF is US\$12.58 for each ODP kilogram, which is phased out. The United Nations Environment Program (UNEP) (2016) provides an average of US\$6.1 (¥40.69 equivalent) through the MLF to help China phase out ODS. This amount is adopted here as the WTP for ozone depletion. In addition, the compensatory usage fee of land is used as the WTP for land consumption. According to Yuan (2013), more habitats will be occupied when pristine land is used for new and expanded landfill sites. According to the Shenzhen Municipal Office (2015), the current compensatory usage fee is ¥32.00 per m². The pollution equivalency factors represent the acid formation potential of SO₂, and the eutrophication potential of NO₃⁻e (European Commission, 2006).

4.2. The environmental costs and benefits of recycling practices

The environmental impacts of the recycling activities related to concrete, brick, steel, and mortar are listed in Table 8. As can be seen from Table 8, the environmental performance of each type of demolition waste differs significantly. For example, recycling 1 tonne of steel leads to an environmental credit of 1811 kg CO₂-e, because recycling activities help reduce the CO₂ generated from the production process by almost 30%. This finding accords with studies such as that of Johnson et al. (2008). Recycling 1 tonne of brick and concrete, however, causes 32.22 kg and 4.83 kg CO₂-e respectively.

When the WTP for each source of waste is considered, the environmental costs for the waste are -¥1.18 (per tonne of concrete), ¥2.86 (per tonne of brick), -¥82.78 (per tonne of steel), and ¥3.52 (per tonne of mortar). The results show that steel and concrete recycling generate environmental benefits. However, brick and mortar recycling have a negative environmental impact.

In terms of environmental costs, concrete recycling has a high positive value (¥0.92) on acidification, indicating its high negative impact. However, it has a relatively low negative value (-¥1.92) on land consumption. It seems that reducing land consumption is the most obvious environmental benefit of concrete recycling.

Unlike concrete recycling, brick recycling has a high positive value (¥1.29) on global climate change, followed by acidification

Table 7

The weights of other environmental impacts represented by WTP.

Main impact category	Sub impact category	Pollution equivalency factor (f_j)	Annual volume (a_j) (10^6 kg)	Coefficient of impact category j (e_{ij})	Pollution discharge fee (c_{ij}) (¥/kg)	Weight (W_i) (¥/kg)
Acidification	SO ₂	1	18.06	0.46	0.665	0.67
	NO _x	0.70	30.16	0.54	0.665	
Eutrophication	NH ₃ -N	4.01	22.48	0.35	0.56	0.34
	TP	32	4.75	0.59	0.175	
	COD	0.23	69.64	0.06	0.7	
Suspended particulate matter	Industrial dust	1.00	10.45	0.24	0.20	0.26
	Smog	1.00	32.37	0.76	0.28	
Solid waste	Industrial waste	1.00	119.62	0.18	0.025	0.05
	Municipal waste	1.00	541.14	0.82	0.06	
Ozone depletion	CFCs	NA	NA	NA	NA	40.69
Land consumption	NA	NA	NA	NA	NA	32.00 (¥/m ²)

Notes: NA = not applicable.

Table 8

Environmental impacts of concrete, brick, steel, and mortar recycling (per tonne).

Environmental impacts		Global warming (CO ₂ -e)	Ozone depletion (ODP)	Acidification (SO ₂ -e)	Eutrophication (NO ₃ -e)	Suspended particulate matter	Solid waste	Land consumption (m ²)	Total environmental cost (¥)
Concrete recycling	Transportation (1.1) (kg)	4.45	8.88×10^{-7}	1.38	2.70×10^{-3}	NA	NA	NA	-1.18
	Recycling activities (2.1–2.5) (kg)	3.09	NA	3.87×10^{-2}	1.94×10^{-2}	2.55×10^{-2}	45	NA	
	Recycling credits (2.6) (kg)	-2.71	NA	-3.62×10^{-2}	-2.16×10^{-2}	-0.52	-50	-0.06	
	Subtotal (kg)	4.83	8.88×10^{-7}	1.38	5.00×10^{-4}	-0.49	-5	-0.06 (m ²)	
	WTP (¥/kg)	0.04	40.69	0.67	0.34	0.26	0.05	32 (¥/m ²)	
	Environmental costs (¥)	0.19	3.61×10^{-5}	0.92	1.70×10^{-4}	-0.13	-0.25	-1.92	
Brick recycling	Transportation (1.2) (kg)	4.45	8.88×10^{-7}	1.38	2.70×10^{-3}	NA	NA	NA	2.86
	Recycling activities (3.1–3.6) (kg)	27.90	NA	0.34	2.3×10^{-4}	0.24	8	1.00×10^{-3}	
	Recycling credits (3.7) (kg)	-0.13	NA	-3.80×10^{-3}	NA	-0.30	NA	NA	
	Subtotal (kg)	32.22	8.88×10^{-7}	1.72	3.0×10^{-3}	-0.06	8	1.00×10^{-3} (m ²)	
	WTP (¥/kg)	0.04	40.69	0.67	0.34	0.26	0.05	32 (¥/m ²)	
	Environmental costs (¥)	1.29	3.61×10^{-5}	1.15	1.02×10^{-3}	-0.02	0.40	0.03	
Steel recycling	Transportation (1.3) (kg)	11.42	2.28×10^{-6}	3.55	6.90×10^{-3}	NA	NA	NA	-82.78
	Recycling activities (4.1) (kg)	911.26	NA	4.75	1.79	2.97	36.23	NA	
	Recycling credits (4.2) (kg)	-2733.77	NA	-14.26	-5.38	-8.90	-108.7	NA	
	Subtotal (kg)	-1811.09	2.28×10^{-6}	-5.96	-3.58	-5.93	-71.77	NA	
	WTP (¥/kg)	0.04	40.69	0.67	0.34	0.26	0.05	32 (¥/m ²)	
	Environmental costs (¥)	-72.44	9.27×10^{-5}	-3.99	-1.22	-1.54	-3.59	NA	
Mortar recycling	Transportation (1.4)	4.45	8.88×10^{-7}	1.38	2.7×10^{-3}	NA	NA	NA	3.52
	Recycling activities (5.1)	3.09	NA	3.87×10^{-2}	1.94×10^{-2}	2.55×10^{-2}	45	NA	
	Subtotal (kg)	7.54	8.88×10^{-7}	1.42	0.02	2.55×10^{-2}	45	NA	
	WTP (¥/kg)	0.04	40.69	0.67	0.34	0.26	0.05	32 (¥/m ²)	
	Environmental costs (¥)	0.30	3.61×10^{-5}	0.95	6.80×10^{-3}	6.63×10^{-3}	2.25	NA	

Notes.

1. Negative values for environmental cost indicate environmental benefit.

2. NA = not applicable or not available.

(¥1.15) and solid waste (¥0.40). The only environmental benefit of brick recycling is associated with suspended particulate matter, with a marginal value of ¥0.02. Assumptions about how the recycled materials will be used may cause the difference. In this regard, bricks are crushed in order to create filling materials. The environmental benefits of these filling materials may be less than the direct use of recycled bricks.

Steel recycling has significant environmental benefit. As can be seen from Table 8, recycling 1 tonne of steel has an environmental benefit of ¥72.44 in terms of global warming, followed by ¥3.99 in terms of acidification and ¥3.59 in terms of solid waste. The only source of environmental cost is ozone depletion; however, this is at a minimal level ($¥9.27 \times 10^{-5}$).

With regard to mortar, recycling credits are not considered

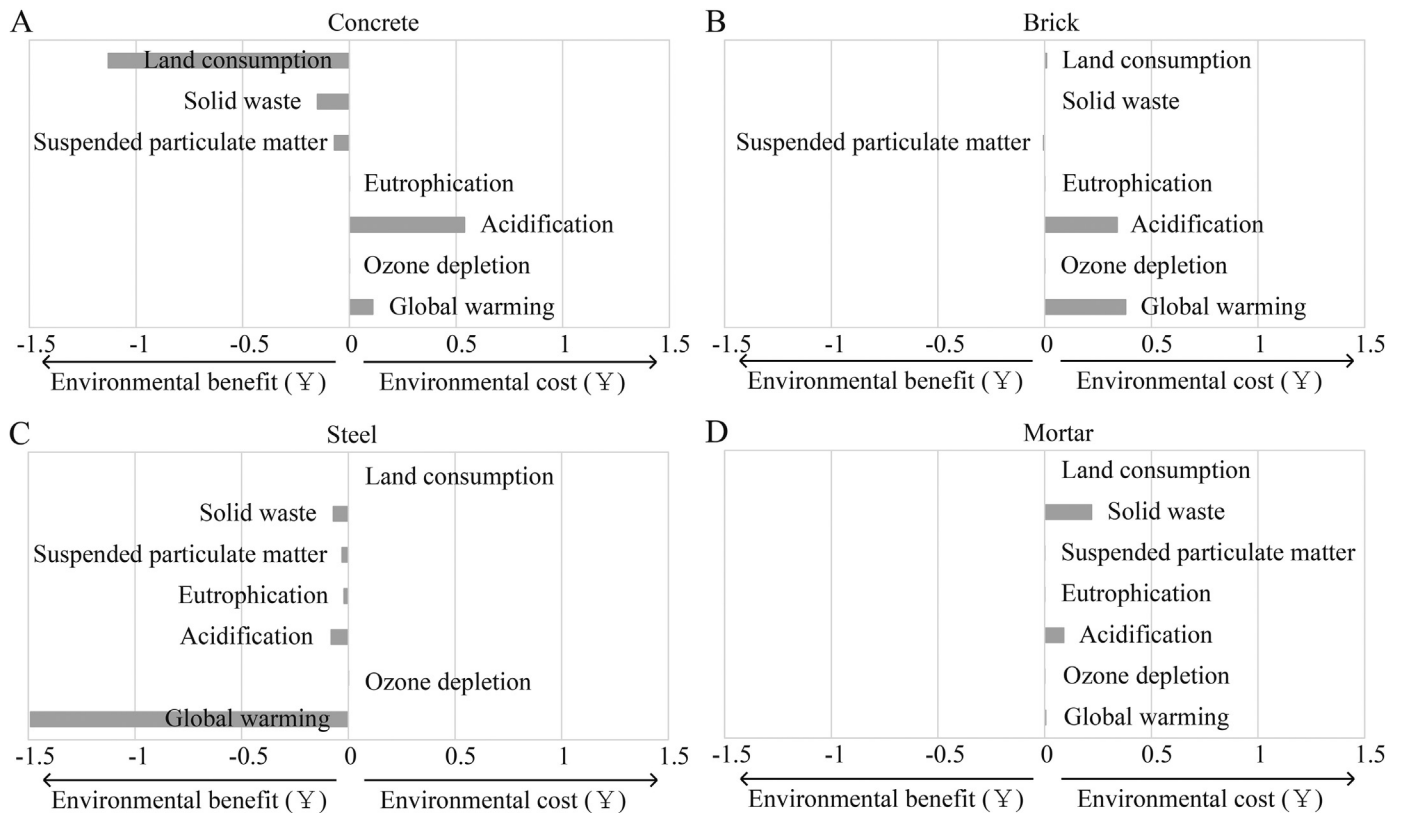


Fig. 7. The environmental benefits and costs of recycling concrete, brick, steel, and mortar from 1 tonne of demolition waste in Shenzhen.

because land use evaluation is highly site-specific and depends on a landfill's depth and the waste's density. Similarly, Habert et al. (2010) argued that the LCA approach is not well suited to assess resource consumption. Instead, they proposed a new assessment related to the stock of resources in order to assess resource depletion at a regional scale. Compared with this study, which relies on a single landfill site to evaluate land consumption, the indicator of abiotic depletion potential (ADP) developed in Habert et al. (2010) is a more accurate representation of resource depletion at a regional scale and can be investigated in future studies to assess land consumption more accurately.

The environmental impacts of direct landfill in terms of each tonne of demolition waste are shown in Table 10. As can be seen from Table 10, the most significant environmental impact from direct landfill is land consumption, with an estimated environmental cost of ¥10.88, followed by acidification (¥0.67), suspended particulate matter (¥0.32), and global warming (¥0.14). When compared with the environmental benefit of ¥1.21 from recycling, there is a difference of ¥13.24 per tonne, demonstrating the

significant environmental benefit of recycling activities.

A landfill charge has been widely recognised as an effective way to manage CDW (Hao et al., 2008). As such, establishing an appropriate landfill charge is critically important. For example, Poon et al. (2001) argued that the landfill charging system should be based on the 'polluter pays principle'. Moreover, at the initial stage, waste producers need to pay at least 50% of landfill costs; then, the costs should be increased to cover the full construction and operational costs of landfill sites. In this context, low landfill charges will not encourage contractors to implement waste management policies and practices (Yuan et al., 2011). The landfill charge in Shenzhen is ¥5.88 (Wang and Yuan, 2009), which is significantly lower than the environmental cost of direct landfill (¥12.04). As a result, such a low landfill charge provides no incentive to contractors to invest in waste management activities. The charge is also not sufficient to offset the environmental impact caused by direct landfill activities, not to mention the construction and operational costs of the landfill sites.

In order to establish relevant strategies to manage the

Table 10

The environmental costs of direct landfill in terms of 1 tonne of demolition waste in Shenzhen.

	Global warming (CO ₂ -e)	Ozone depletion (ODP)	Acidification (SO ₂ -e)	Eutrophication (NO ₃ -e)	Suspended particulate matter	Solid waste	Land consumption
1. Transportation (kg)	3.36	6.71×10^{-7}	1.04	1.55×10^{-3}	NA	NA	NA
2. Disposal activities (kg)	0.22	0	9.22×10^{-3}	1.36×10^{-3}	1.24	0	0.34 (m ²)
Total (kg)	3.58	6.71×10^{-7}	1.04	2.91×10^{-3}	1.24	0	0.34 (m ²)
WTP (¥/kg)	0.04	40.69	0.67	0.34	0.26	0.05	32 (¥/m ²)
Environmental costs (¥)	0.14	2.73×10^{-5}	0.67	9.90×10^{-4}	0.32	0	10.88
Total (¥)	12.04						

Table 11

The environmental costs and benefits (categorized by activity) of recycling 1 tonne of demolition waste in Shenzhen.

Environmental impacts Recycling practices		Global warming (CO ₂ -e)	Ozone depletion (ODP)	Acidification (SO ₂ -e)	Eutrophication (NO ₃ -e)	Suspended particulate matter	Solid waste	Land consumption
Concrete recycling	Transportation	0.10	0.00	0.54	0.00	0.00	0.00	0.00
	Recycling activities	0.07	0.00	0.02	0.00	0.00	1.32	0.00
	Recycling credits	−0.06	0.00	−0.01	0.00	−0.08	−1.47	−1.13
	Total	0.11	0.00	0.55	0.00	−0.08	−0.15	−1.13
Brick recycling	Transportation	0.05	0.00	0.27	0.00	0.00	0.00	0.00
	Recycling activities	0.33	0.00	0.07	0.00	0.02	0.12	0.01
	Recycling credits	0.00	0.00	0.00	0.00	−0.02	0.00	0.00
	Total	0.38	0.00	0.34	0.00	0.00	0.12	0.01
Steel recycling	Transportation	0.01	0.00	0.05	0.00	0.00	0.00	0.00
	Recycling activities	0.75	0.00	0.07	0.01	0.02	0.04	0.00
	Recycling credits	−2.24	0.00	−0.20	−0.04	−0.05	−0.11	0.00
	Total	−1.49	0.00	−0.08	−0.02	−0.03	−0.07	0.00
Mortar recycling	Transportation	0.02	0.00	0.09	0.00	0.00	0.00	0.00
	Recycling activities	0.01	0.00	0.00	0.00	0.00	0.22	0.00
	Total	0.03	0.00	0.09	0.00	0.00	0.22	0.00

environmental impact of demolition waste, it is also useful to understand the environmental cost and benefit of each activity (see Table 11). As can be seen from Table 11, recycling 1 tonne of demolition waste has a relatively low environmental impact on ozone depletion and eutrophication. With regard to global warming, the recycling activities of steel (¥0.75) are the most significant contributors, followed by the recycling activities of brick (¥0.33). It seems that in order to manage and reduce the carbon emissions from recycling demolition waste, steel and brick are the two sources that should be focused on. Similarly, the most significant contributors to acidification are transportation activities, with a total value of ¥0.95. In addition, the recycling activities of concrete and mortar are the two most important contributors to solid waste (¥1.32 and ¥0.22 respectively). In terms of environmental benefits, the most significant sources are the recycling credits of steel with regard to global warming (¥2.24) and the recycling credits of concrete with regard to solid waste and land consumption (¥1.47 and ¥1.13 respectively).

These values provide useful references for the establishment of incentive schemes to promote recycling activities. Tam and Tam (2006) argued that the lack of financial incentive schemes is the reason behind the low recycling rate for construction debris. Indeed, financial incentives are found to have a positive effect on the reduction of the total waste produced (Buccioli et al., 2015). Based on the results of the current study, ¥1.21 per tonne should be provided as an incentive to encourage recycling activities.

However, the results of this study need cautious interpretation when applied to other countries which have significantly different WTP values. For example, Japan has a carbon tax of US\$2.89 (equivalent to ¥19.83) per tonne of CO₂-e. This is significantly less than the WTP identified in this study (¥38.65). In Europe, the charge for sulphur emissions is €1600/tonne (equivalent to ¥11.79/kg) in Sweden and €1300/tonne in Denmark (equivalent to ¥9.58/kg) (Millock et al., 2004). These values are significantly higher than the discharge fee in Shenzhen, which is only ¥0.95/kg. However, the method presented in this study will be useful to help investigate the environmental costs and benefits of demolition waste in other countries and thereby establish appropriate levels of charges. In addition, transportation distance can affect the accuracy of an LCA study (Faleschini et al., 2016). It is recommended that future studies

investigate landfill charges using various transportation scenarios.

6. Conclusions

Managing demolition waste is important for sustainable urban development. Because of the rapid urban development of China, a significant amount of demolition waste is generated each year. As such, investing in waste management activities, such as recycling and reusing, seems imperative. This study employs LCA and WTP approaches to investigate the environmental impact of recycling and direct landfill activities, thereby providing guidance for policy improvements such as the establishment of appropriate landfill disposal charges and incentive-based schemes to encourage recycling.

The results show that recycling 1 tonne of demolition waste in Shenzhen leads to an environmental benefit of ¥1.21. Further, the most significant sources of environmental benefit are land consumption in terms of concrete recycling (¥1.13) and global warming in terms of steel recycling (¥1.49). These sources of environmental benefit offset the environmental costs of acidification from concrete and brick recycling (¥0.54 and ¥0.34 respectively), global warming from brick and concrete recycling (¥0.38 and ¥0.11 respectively), and solid waste from mortar recycling (¥0.22). The results also show that the current landfill charge of ¥5.88 is not sufficient to offset the environmental cost of landfill (¥12.04), the construction and operational costs of landfill sites, and the potential landfill penalty charge.

This study has some limitations. The assumptions, such as the end-of-life treatment of recycled products, are closely related to the accuracy of the results. If bricks are recycled and reused directly (compared with this study's assumption that they are crushed as filling materials) and mortar is reused as recycled aggregate, the environmental benefit of recycling activities will be higher. Future studies could focus on various recycling scenarios in order to understand the environmental benefit of recycling when compared with traditional landfill.

Acknowledgement

This research was supported by the Australian Government

through the Australian Research Council's Discovery Early Career Researcher Award funding scheme (project DE170101502).

References

- Abbas, A., Fathifazl, G., Isgor, O.B., Razaqpur, A.G., Fournier, B., Foo, S., 2009. Durability of recycled aggregate concrete designed with equivalent mortar volume method. *Cem. Concr. Compos.* 1 (8), 555–563.
- Aliabdo, A.A., Abd-Elmoaty, A.E., Hassan, H.H., 2014. Utilization of crushed clay brick in concrete industry. *Alexandria Eng. J.* 53 (1), 151–168.
- Bhada-Tata, P., Hoornweg, D., 2016. Solid Waste and Climate Change. In: *State of the World*. Island Press/Center for Resource Economics, pp. 239–255.
- Blengini, G.A., 2009. Life cycle buildings, demolition and recycling potential: a case study in Turin, Italy. *Build. Environ.* 44 (2), 319–330.
- Blengini, G.A., Garbarino, E., 2010. Resources and waste management in Turin (Italy): the role of recycled aggregates in the sustainable supply mix. *J. Clean. Prod.* 18, 1021–1030.
- Bohne, R.A., Brattebø, H., Bergsdal, H., 2008. Dynamic eco-efficiency projections for construction and demolition waste recycling strategies at the city level. *J. Ind. Ecol.* 12 (1), 52–68.
- Bravo, M., de Brito, J., Pontes, J., Evangelista, L., 2015. Mechanical performance of concrete made with aggregates from construction and demolition waste recycling plants. *J. Clean. Prod.* 99, 59–74.
- British Standards Institution, 2008. Public Available Specification (PAS) 2050: Specification for the Assessment of the Life Cycle Greenhouse Gas Emissions of Goods and Services. London.
- BS 8500–8502, 2002. Concrete-complementary British Standard to BS EN 206-1. Part 2. Specification for constituent materials and concrete; 2002.
- Buccioli, A., Montinari, N., Piovesan, M., 2015. Do not trash the incentive! Monetary incentives and waste sorting. *Scand. J. Econ.* 117 (4), 1204–1229.
- Burchart-Korol, D., 2013. Life cycle assessment of steel production in Poland: a case study. *J. Clean. Prod.* 54, 235–243.
- Burns, A.C., Bush, R.F., 2010. *Marketing Research*, sixth ed. Pearson Higher Ed.
- Coelho, A., de Brito, J., 2012. Influence of construction and demolition waste management on the environmental impact of buildings. *Waste Manag.* 32 (3), 532–541.
- Coelho, A., de Brito, J., 2013. Economic viability analysis of a construction and demolition waste recycling plant in Portugal—part I: location, materials, technology and economic analysis. *J. Clean. Prod.* 39, 338–352.
- Cuellar-Franca, R.M., Azapagic, A., 2012. Environmental impacts of the UK residential sector: life cycle assessment of houses. *Build. Environ.* 54, 86–99.
- Danish Ministry of the Environment, 2005. Spatial Differentiation in Life Cycle Impact Assessment – the EDIP2003 Methodology. Available at: <http://www2.mst.dk/udgiv/publications/2005/87-7614-579-4/pdf/87-7614-580-8.pdf> (cited 03 Sep 2016).
- Ecoinvent, 2016. The Ecoinvent Database. Available at: <http://www.ecoinvent.org/database/database.html> (cited 06 Sep 2016).
- European Commission, 2006. Study to Examine the Benefits of the End of Life Vehicles Directive and the Costs and Benefits of a Revision of the 2015 Targets for Recycling, Re-use and Recovery under the ELV Directive. Final Report to DG Environment. GHK. Bio Intelligence Service, Birmingham.
- Faleschini, F., Zanini, M.A., Pellegrino, C., Pasinato, S., 2016. Sustainable management and supply of natural and recycled aggregates in a medium-size integrated plant. *Waste Manag.* 49, 146–155.
- Faleschini, F., Zanini, M.A., Hofer, L., Zampieri, P., Pellegrino, C., 2017. Sustainable management of demolition waste in post-quake recovery processes: the Italian experience. *Int. J. Disaster Risk Reduct.* 24, 72–182.
- Fatta, D., Papadopoulos, A., Avramikos, E., Sgourou, E., Moustakas, K., Kourmoussis, F., Mentzis, A., Loizidou, M., 2003. Generation and management of construction and demolition waste in Greece—an existing challenge. *Resour. Conserv. Recycl.* 40 (1), 81–91.
- Finnveden, G., Johansson, J., Lind, P., Moberg, Å., 2005. Life cycle assessment of energy from solid waste—part 1: general methodology and results. *J. Clean. Prod.* 13 (3), 213–229.
- GEF, 2010. GEF Impact Evaluation of the Phaseout of Ozone-depleting Substances in Countries with Economies in Transition. Available at: <http://documents.worldbank.org/curated/en/767101468322794896/pdf/653380WP0v10OD0C0disclosed011010110.pdf> (cited 17 Sep 2016).
- Gong, Z., Ding, R., Chen, B., June 2011. Environmental impact comparison for concrete waste treatment options. *J. Eng. Manag.* 25 (3), 266–270.
- Gu, L.J., 2009. Investigating the Environmental Impact of China's Construction Industry by Life Cycle Assessment. Unpublished PhD thesis. Tsinghua University.
- Habert, G., Bouzidi, Y., Chen, C., Jullien, A., 2010. Development of a depletion indicator for natural resources used in concrete. *Resour. Conserv. Recycl.* 54 (6), 364–376.
- Hao, J.L., Hills, M.J., Shen, L.Y., 2008. Managing construction waste on-site through system dynamics modelling: the case of Hong Kong. *Engineering. Constr. Archit. Manag.* 15 (2), 103–113.
- Hieta, M., 2013. Waste management plants and technology for recycling construction and demolition (C&D) waste: state-of-the-art and future challenges. In: Pacheco-Torgal, F., Tam, V., Labrincha, J., Ding, Y., de Brito, J. (Eds.), *Handbook of Recycled Concrete and Demolition Waste*. Woodhead Publishing Limited, Cambridge, pp. 53–75.
- Husted, B.W., Russo, M.V., Meza, C.E.B., Tilleman, S.G., 2014. An exploratory study of environmental attitudes and the willingness to pay for environmental certification in Mexico. *J. Bus. Res.* 67 (5), 891–899.
- ISO 14067, 2013. *Greenhouse Gases – Carbon Footprint of Products – Requirements and Guidelines for Quantification and Communication*. International Organization for Standardization, Geneva.
- Johnson, J., Reck, B.K., Wang, T., Graedel, T.E., 2008. The energy benefit of stainless steel recycling. *Energy Policy* 13 (1), 181–192.
- Jun, X., Chenghua, Y., Degang, T., Guixiang, Z., Bing, X., Peng, J., Panglong, C., 2012. Active Fault Exploration and Seismic Hazard Assessment in Shenzhen City. *Urban Geotechnical Investigation & Surveying*, pp. 1–047.
- Kartam, N., Al-Mutairi, N., Al-Ghusain, I., Al-Humoud, J., 2004. Environmental management of construction and demolition waste in Kuwait. *Waste Manag.* 29 (10), 1049–1059.
- Kulatunga, U., Amaratunga, D., Haigh, R., Rameezdeen, R., 2006. Attitudes and perceptions of construction workforce on construction waste in Sri Lanka. *Manag. Environ. Qual.* 17 (1), 55–72.
- Li, X., 2008. Recycling and reuse of waste concrete in China: Part I. Material behaviour of recycled aggregate concrete. *Resour. Conserv. Recycl.* 53 (1), 36–44.
- Li, X., Wu, X., Zhang, Z., 2005. Study on social WTP for environmental impacts based on the LCA theory. *J. Harbin Inst. Technol.* 11, 1507–1510.
- Lu, W., Tam, V.W., 2013. Construction waste management policies and their effectiveness in Hong Kong: a longitudinal review. *Renew. Sustain. energy Rev.* 23, 214–223.
- Lu, M., Lau, S.C., Poon, C.S., 2009. Simulation approach to evaluating cost efficiency of selective demolition practices: case of Hong Kong's Kai Tak airport demolition. *J. Constr. Eng. Manag.* 135 (6), 448–457.
- Lu, W., Yuan, H., Li, J., Hao, J., Mi, X., Ding, Z., 2011. An empirical investigation of construction and demolition waste generate rates in Shenzhen city, South China. *Waste Manag.* 31 (4), 680–687.
- Lu, W., Webster, C., Peng, Y., Chen, X., Zhang, X., 2017. Estimating and calibrating the amount of building-related construction and demolition waste in urban China. *Int. J. Constr. Manag.* 17 (1), 13–24.
- Martin, A., Scott, I., 2003. The effectiveness of the UK landfill tax. *J. Environ. Plan. Manag.* 46 (5), 673–689.
- Mercante, I.T., Bovea, M.D., Ibáñez-Forés, V., Arena, A.P., 2012. Life cycle assessment of construction and demolition waste management systems: a Spanish case study. *Int. J. Life Cycle Assess.* 17, 232–241.
- Millock, K., Nauges, C., Sterner, T., 2004. Environmental taxes: a comparison of French and Swedish experience from taxes on industrial air pollution. *CESifo DICE Rep.* 2 (1), 30–34.
- Nunes, K.R.A., Mahler, C.F., Valle, R., Neves, C., 2007. Evaluation of investments in recycling centres for construction and demolition wastes in Brazilian municipalities. *Waste Manag.* 27 (11), 1531–1540.
- Oritz, P., Pasqualini, J.C., Castells, F., 2010. Environmental performance of construction waste: comparing three scenarios from a case study in Catalonia, Spain. *Waste Manag.* 30 (4), 646–654.
- Poon, C.S., Yu, A.T.W., Ng, L.H., 2001. On-site sorting of construction and demolition waste in Hong Kong. *Resour. Conserv. Recycl.* 32 (2), 157–172.
- RILEM, 1994. Recommendation: specifications for concrete with recycled aggregates. *Mater. Struct.* 27, 557–559.
- Rodrigues, F., Carvalho, M.T., Evangelista, L., de Brito, J., 2013. Physical–chemical and mineralogical characterization of fine aggregates from construction and demolition waste recycling plants. *J. Clean. Prod.* 52, 438–445.
- Shanghai Construction Standard Society (SCSS), 2007. Technical Code for Application of Recycled Aggregate Concrete (DG/TJ07-008). Shanghai.
- Shenzhen Municipal Office, 2015. Regulations of Land Use Fee of the Shenzhen Special Economic Zone. Available from: http://www.szpl.gov.cn/xxgk/zcfq/fqk/tid/200908/t20090825_42386.html (cited 24 Jan 2017).
- Solis-Guzmán, J., Marrero, M., Montes-Delgado, M.V., Ramírez-de-Arellano, A.A., 2009. Spanish model for quantification and management of construction waste. *Waste Manag.* 29 (9), 2542–2548.
- Statistics Norway, 2017. Waste from Building and Construction in 2014. Available from: <http://www.ssb.no/en/natur-og-miljo/statistikk/avfbygganl> (cited 14 Aug 2017).
- Sweis, G., Sweis, R., Hammad, A.A., Shboul, A., 2008. Delays in construction projects: the case of Jordan. *Int. J. Proj. Manag.* 26 (6), 665–674.
- Tam, V.W.Y., Tam, C.M., 2006. A review on the viable technology for construction waste recycling. *Resour. Conserv. Recycl.* 47 (3), 209–221.
- Tam, V.W.Y., Shen, L.Y., Fung, I.W.H., Wang, J.Y., 2007a. Controlling construction waste by implementing governmental ordinances in Hong Kong. *Constr. Innov.* 7 (2), 149–166.
- Tam, V.W.Y., Tam, C.M., Le, K.N., 2007b. Removal of cement mortar remains from recycled aggregate using pre-soaking approaches. *Resour. Conserv. Recycl.* 50 (1), 82–101.
- United Nations Environment Program, 2016. In: 76th Meeting of the Executive Committee of the Multilateral Fund for the Implementation of the Montreal Protocol. Available at: <http://UNEP/OzL.Pro/ExCom/76/25> (Cited 17 Sep 2016).
- U.S. Environmental Protection Agency, 2013. Sustainable Management of Construction and Demolition Materials. Available at: <https://www.epa.gov/smm/sustainable-management-construction-and-demolition-materials> (cited 16 Sep 2016).
- Wang, D.C., 2013. Environmental Impacts of Disposing Wasted Clay Brick Based on the Life-cycle Assessment. Published master thesis. Tsinghua University.

- Wang, J.Y., Yuan, H.P., 2009. Construction waste management model based on system dynamics. *Syst. Eng. Theory & Pract.* 29 (7), 173–180.
- Wu, P., Feng, Y., 2012. Using lean practices to improve current carbon labelling schemes for construction materials—a general framework. *J. Green Build.* 7 (1), 173–191.
- Wu, P., Low, S., 2011. Managing the embodied carbon of precast concrete columns. *J. Mater. Civ. Eng.* 23 (8), 1192–1199.
- Wu, P., Low, S.P., Xia, B., Zuo, J., 2014. Achieving transparency in carbon labelling for construction materials—Lessons from current assessment standards and carbon labels. *Environ. Sci. Policy* 44, 11–25.
- Wu, P., Xia, B., Wang, X., 2015. The contribution of ISO 14067 to the evolution of global greenhouse gas standards—a review. *Renew. Sustain. Energy Rev.* 47, 142–150.
- Wu, P., Mao, C., Wang, J., Song, Y., Wang, X., 2016. A decade review of the credits obtained by LEED v2. 2 certified green building projects. *Build. Environ.* 102, 167–178.
- Wu, H., Duan, H., Zheng, L., Wang, J., Niu, Y., Zhang, G., 2016a. Demolition waste generation and recycling potentials in a rapidly developing flagship megacity of South China: prospective scenarios and implications. *Constr. Build. Mater.* 113, 1007–1016.
- Wu, H., Wang, J., Duan, H., Ouyang, L., Huang, W., Zuo, J., 2016b. An innovative approach to managing demolition waste via GIS (geographic information system): a case study in Shenzhen city, China. *J. Clean. Prod.* 112, 494–503.
- Xing, W.H., Charles, H., 2006. Decontamination of granular wastes by mining separation techniques. *J. Clean. Prod.* 14, 748–753.
- Yang, J.X., 2002. Life Cycle Assessment of Products: Methods and Applications. China Meteorological Press, Beijing.
- Yang, X.M., 2003. Quantitative Assessment of Environmental Impact on Construction during Planning and Designing Phases. Master thesis. Department of Construction Management, Tsinghua University.
- Yu, S., Wei, Y., Guo, H., Ding, L., 2014. Carbon emission coefficient measurement of the coal-to-power energy chain in China. *Appl. Energy* 114, 290–300.
- Yuan, H., 2013. Key indicators for assessing the effectiveness of waste management in construction projects. *Ecol. Indic.* 24, 476–484.
- Yuan, H., Wang, J., 2014. A system dynamics model for determining the waste disposal charging fee in construction. *Eur. J. Oper. Res.* 237 (6), 988–996.
- Yuan, H.P., Shen, L.Y., Hao, J.J.L., Lu, W.S., 2011. A model for cost-benefit analysis of construction and demolition waste management throughout the waste chain. *Resour. Conserv. Recycl.* 55 (6), 604–612.
- Zanini, M.A., Faleschini, F., Zampieri, P., Pellegrino, C., Gecchele, G., Gastaldi, M., Rossi, R., 2017. Post-quake urban road network functionality assessment for seismic emergency management in historical centres. *Struct. Infrastruct. Eng.* 13 (9), 1117–1129.
- Zhang, Z., Wu, X., Yang, X., Zhu, Y., 2006. BEPAS — a life cycle building environmental performance assessment model. *Build. Environ.* 41 (5), 669–675.
- Zhang, X., Shen, L., Zhang, L., 2013. Life cycle assessment of the air emissions during building construction process: a case study in Hong Kong. *Renew. Sustain. Energy Rev.* 17, 160–169.
- Zhao, W., Rotter, S., 2008. The current situation of construction & demolition waste management in China. In: *Proceedings of the 2nd International Conference on Bioinformatics and Biomedical Engineering*, pp. 4747–4750.
- Zhao, W., Leeftink, R.B., Rotter, V.S., 2010. Evaluation of the economic feasibility for the recycling of construction and demolition waste in China — the case of Chongqing. *Resour. Conserv. Recycl.* 54 (6), 377–389.
- Zheng, L., Ge, Z., Yao, Z., Gao, Z., 2011. Mechanical properties of mortar with recycled clay-brick-powder. In: *ICCTP 2011: towards Sustainable Transportation Systems*, pp. 3379–3388.